

WIRELESS HIGH PRECISION DIGITAL INDICATORS

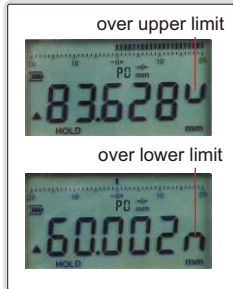
ATTENTION: RECHARGEABLE BATTERY, FOR 24 HOURS CONTINUOUS WORKING

LINEAR BALL BEARINGS FOR TEN MILLION TIMES USE

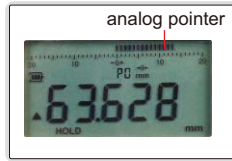
ABSOLUTE ENCODER, THE ORIGINAL DATA REMAINS AFTER POWER OFF

INSPECTION CERTIFICATE
TRACEABLE TO NIST

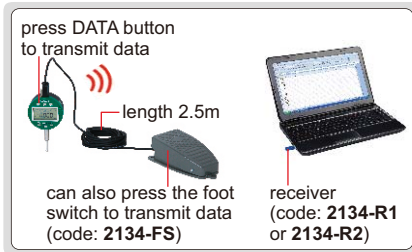
warning when over tolerance



analog pointer



Transmit data



- Built-in wireless transmission, ZigBee single
- Linear ball bearings for ten million times use
- Absolute encoder, the original data remains after power off
- Reading in digital and analog
- Button function: data output, tolerance, data preset, data hold, measuring direction change, max./min./TIR, power off time, on/off, mm/inch, adjust resolution
- Power: rechargeable battery, for 24 hours continuous working
- Optional accessory: contact points (page 173~175) foot switch, code: **2134-FS** wireless receiver, code: **2134-R1** (keyboard format) **2134-R2** (serial port format)

Low precision

Carbide probe

Adjustable resolution: 0.0005mm/0.00002"
0.001mm/0.00005"
0.01mm/0.0005"

| Code | Range | Accuracy | Hysteresis | A | B | C | ØD | Remark |
|------------------|-------------|----------|------------|---------|--------|--------|-------|-----------|
| 2134-10* | 12.7mm/0.5" | 3µm | 1.5µm | 75.4mm | 20.6mm | 24.8mm | 5mm | flat back |
| 2134-10L* | 12.7mm/0.5" | 3µm | 1.5µm | 75.4mm | 20.6mm | 24.8mm | 5mm | lug back |
| 2134-25* | 25.4mm/1" | 3µm | 1.5µm | 109.5mm | 38.5mm | 41mm | 5mm | flat back |
| 2134-50* | 50.8mm/2" | 3µm | 1.5µm | 201mm | 32mm | 72mm | 4.5mm | flat back |

High precision

Ruby probe

Adjustable resolution: 0.0002mm/0.00001"
0.001mm/0.00005"
0.01mm/0.0005"

| Code | Range | Accuracy | Hysteresis | A | B | C | ØD | Remark |
|-------------------|-------------|----------|------------|-------|------|------|----|-----------|
| 2134-101* | 12.7mm/0.5" | 1.5µm | 1µm | 77.4 | 26 | 21.4 | 4 | flat back |
| 2134-101L* | 12.7mm/0.5" | 1.5µm | 1µm | 77.4 | 26 | 21.4 | 4 | lug back |
| 2134-251* | 25.4mm/1" | 1.8µm | 1µm | 116.1 | 42.5 | 44 | 4 | flat back |

* Supplied with manufacturer inspection certificate traceable to NIST USA



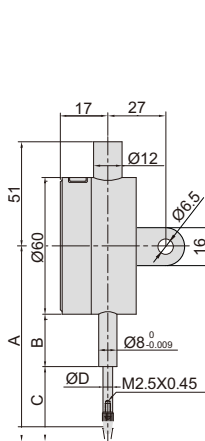
2134-10



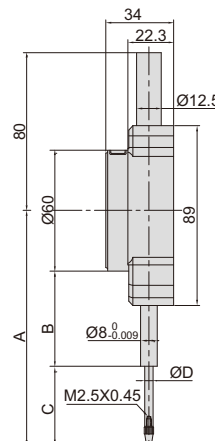
2134-25



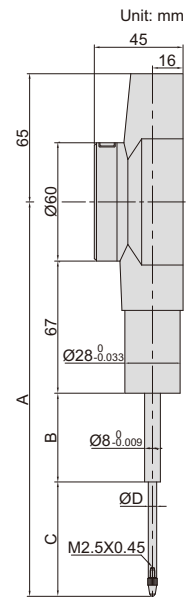
2134-50



2134-10L
2134-101L



2134-25
2134-251



2133-50

spindle lift knob is included



max./min./TIR

