

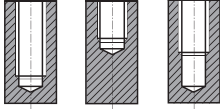
**PRO-X****KILAVUZLAR  
TAPS**

## WITHWORTH BSP BORU DIŐ HELİSEL KILAVUZ DIN5156 / HSS-E

### WHITWORTH BSP PIPE TAPS - DIN5156 / HSS-E

► Güçlü geometrisi sayesinde açık deliklerde diđer kılavuzlara göre çok daha hızlı kesme hızlarına çıkılabilir.

► Suitable for through hole in more cutting speed than other taps due to strong geometry.

**Delik Tipi**

DIN 5156

HSS-E

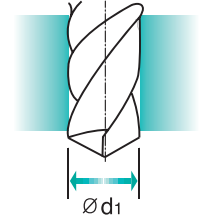
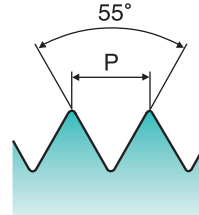
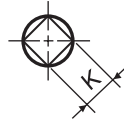
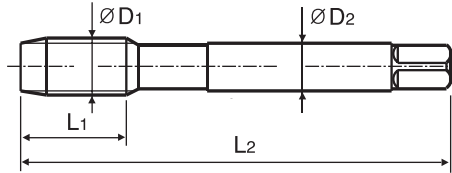
DIN  
5156

55°

C

Parlak

R40

Makine Kılavuzu  
Machine taps

Ölçü : mm

| ÖLÇÜ  | Adım | KOD        | Diő Boyu | Tam Boy | Saft Çapı | Dört Köőe Ölçüsü | Kılavuz Matkap Çapı |  |
|-------|------|------------|----------|---------|-----------|------------------|---------------------|--|
| D1    | P    |            | L1       | L2      | D2        | K                | d1                  |  |
| G1/8" | - 28 | PKI-931828 | 20       | 90      | 7         | 5.5              | 8.8                 |  |
| G1/4" | - 19 | PKI-931419 | 22       | 100     | 11        | 9                | 11.8                |  |
| G3/8" | - 19 | PKI-933819 | 22       | 100     | 12        | 9                | 15.25               |  |
| G1/2" | - 14 | PKI-931214 | 25       | 125     | 16        | 12               | 19                  |  |
| G3/4" | - 14 | PKI-933414 | 28       | 140     | 20        | 16               | 24.5                |  |
| G1"   | - 11 | PKI-931111 | 30       | 160     | 25        | 20               | 30.75               |  |