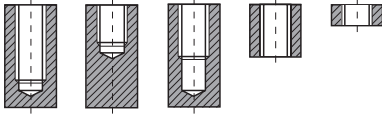


PRO-X**KILAVUZLAR
TAPS**

OVALAMA KILAVUZU - YAĞ KANALLI COLD FORM TAP - OIL GROOVE

- Yumuşak malzemeler ve min %8-10 elastiklik modülüne sahip malzemelerin işlenmesi için uygundur.
Matkap çapı normal kılavuzların çapından daha büyüktür.

- Suitable for threading soft materials with at least % 8 - 10 elongation.
The pre-drilling holes are bigger than normal sized holes.

Delik Tipi

DIN 371



DIN 376

HSS-E

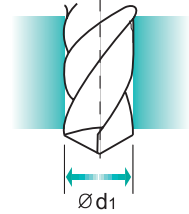
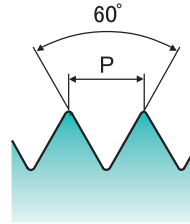
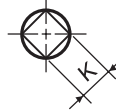
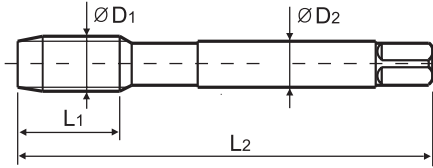
DIN
371/376

6HX



NI

Yağ Kanallı
Ovalama Kılavuzu
Cold forming taps with
oil grooves



Ölçü : mm

ÖLÇÜ	Adım		KOD	Diş Boyu	Tam Boy	Şaft Çapı	Dört Köşe Ölçüsü	Kılavuz Matkap Çapı	
	D1	P		L1	L2	D2	K	d1	
M2	-	0.4	PKI-4M2	8	45	2.8	2.1	1.83	
M3	-	0.5	PKI-4M3	11	56	3.5	2.7	2.8	
M4	-	0.7	PKI-4M4	13	63	4.5	3.4	3.7	
M5	-	0.8	PKI-4M5	15	70	6	4.9	4.65	
M6	-	1	PKI-4M6	17	80	6	4.9	5.55	
M8	-	1.25	PKI-4M8	20	90	8	6.2	7.4	
M10	-	1.5	PKI-4M10	22	100	10	8	9.3	
M12	-	1.75	PKI-4M12	24	110	9	7	11.2	
M14	-	2	PKI-4M14	26	110	11	9	13	
M16	-	2	PKI-4M16	27	110	12	9	15	