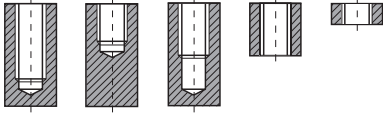


PRO-X**KILAVUZLAR
TAPS**

KARBÜR DÜZ KILAVUZ CARBIDE TAP STRAIGHT

► Çelik ve dökme demirin işlenmesi için uygundur.

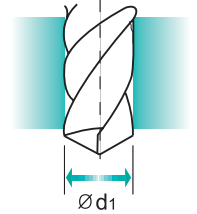
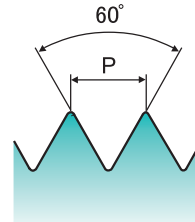
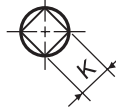
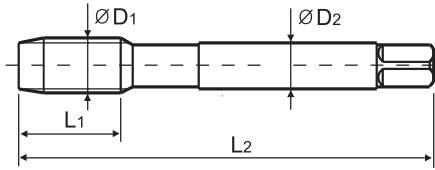
► Suitable for tapping cast iron or similar work materials.

Delik Tipi

DIN 371



DIN 376

HM**DIN
371/376****6HX****Parlak****Makine Kılavuzu
Machine taps**

Ölçü : mm

ÖLÇÜ	Adım	KOD	Diş Boyu	Tam Boy	Şaft Çapı	Dört Köşe Ölçüsü	Kılavuz Matkap Çapı	
D ₁	P		L ₁	L ₂	D ₂	K	d ₁	
M3	× 0.5	PKI-5M3	11	56	3.5	2.7	2.5	
M4	× 0.7	PKI-5M4	13	63	4.5	3.4	3.3	
M5	× 0.8	PKI-5M5	15	70	6	4.9	4.2	
M6	× 1	PKI-5M6	17	80	6	4.9	5	
M8	× 1.25	PKI-5M8	20	90	8	6.2	6.8	
M10	× 1.5	PKI-5M10	22	100	10	8	8.5	
M12	× 1.75	PKI-5M12	24	110	9	7	10.2	